

# AUTOGETWIFI Intelligent Fiber Endface Microscope



## FEATURES:

- Portable, with integrated display
- Foldable inspector
- Wireless transmission
- One click measurement



### All-In-One Design

Based on embedded Linux system, a 3.2 inch high density LCD is integrated into the AutoGetWiFi probe. AutoGetWiFi can inspect and analyze fiber Endface independently, no relying on other devices.

### Fold-able Body Makes the Upper and Lower Rack Testing Easy

With unique Rotational Axle design, AutoGet WiFi can be used in straight or be folded to 120 ° for measurements at different heights or conditions.



### Single Hand Operation is Easy and Effective

With integrated 3.2inch HD touch screen, the interactive with the visual inspector is easy and effective. One hand operation is easy with using two push buttons which cover most setting functions. A touch pen is also equipped for input through touch screen.



**AutoGetWiFi  
Testing Process**

Auto Center

Auto Focus

Capture Image

Analyze

Report

**One Clicking for the Whole Measurement**

Just click the trigger button, AutoGetWiFi will complete the whole measurement automatically. Dimension software will identify the device under testing, auto-center, auto focus then capture the high quality image. The fiber Endface will be analyzed accurately following IEC or customized standard. The testing results can be saved for quality control.

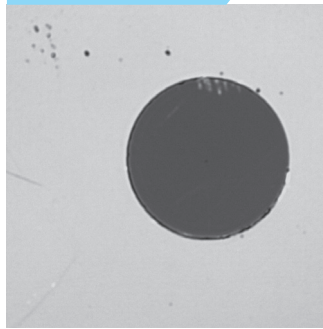


**Wireless Data Transmit**

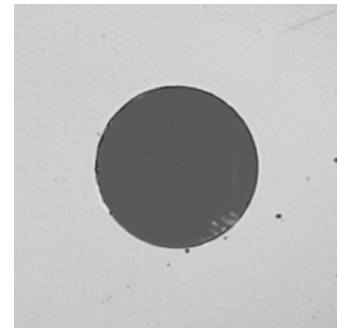
The testing results, including the data, image and comments can be saved in embedded Micro SD card in PDF or Excel formats. Via wireless connection, AutoGetWiFi can transmit the real-time image, data and report to windows. The image transmission is also supported in USB cable mode.



**Auto Center**



Before



After

Item	Parameters
Resolution	0.52μm
Image Sensor	1/1.8" CMOS
Optical Magnification	× 8.72
Display	480*800 3.2 "LCD Touch Screen
Live Image	25fps
View Of Field	620μm × 620μm (Preview Mode) 250μm × 250μm (Measure Mode) 130μm × 130μm (Fiber Core Mode)
Digital ZOOM	3 levels
Measurement time	<2 sec (exclude Auto Focus)
Light Source	Blue LED
Lighting	Coaxial
Signal output	WiFi or USB Type C
Power	Internal Li-ion battery(rechargeable, replaceable)
Duration	6 hours
Recharge Time	3 hours (Current limit: 2A)
Power Supplie	USB AC adaptor 5V/2A. include plugs for US, EU, UK, AU
Aux functions	white LED for illumination Pass/Fail Indicator 120° fold-able body
Operational temperature	-5°C ~ 40°C
Storage temperature	-20°C ~ 55°C
Humidity	90% non condensing
Weight	565g
Size (H*W*D)	281mm * 201mm * 57mm (folded) 341mm * 60mm * 57mm(Straight)