

288F Fiber Optic Splice Closures

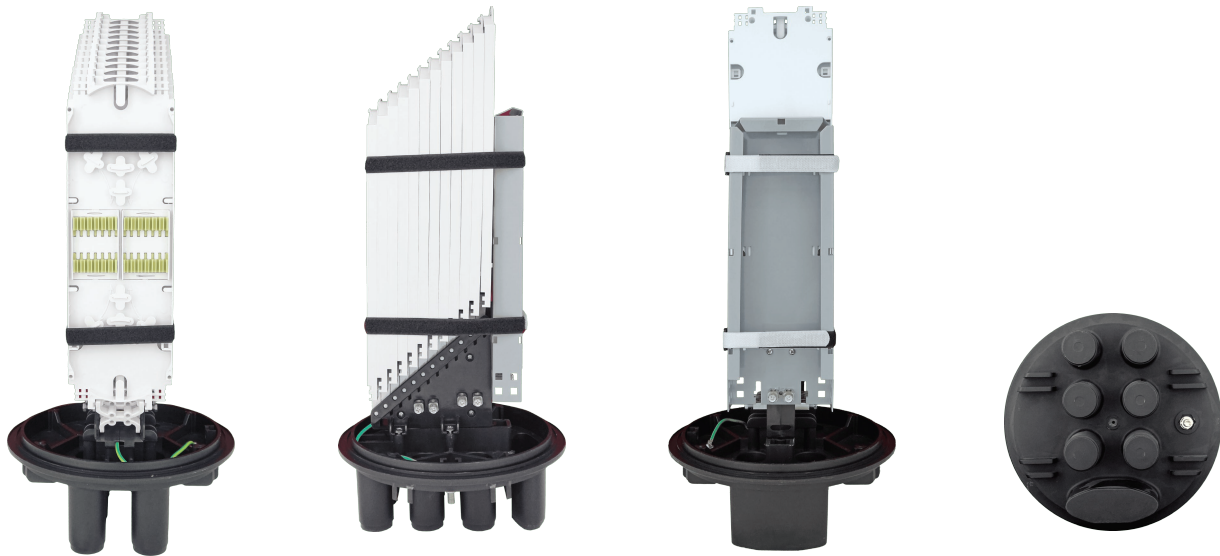
12 Trays, 12x24 Fibers

Features

- May be used for cut, uncut and taut sheath applications.
- May be used for all fiber optic cable.
- Sheath retention & central strength member fasten system included.
- Closure construction and lightweight plastic provides strength and resistance to chemical and U.V attack
- Installation and reentry with a minimum of tools
- All hardware are included
- Protection class: IP68
- RoHS compliance

Application

Underground, Aerial, Vault, Pole Mounting and Wall Mountable



Specifications

Model No.	YT01028 SSC-566250-6P-288-12T/12T-T102A 566x250m, 288 Fibers Capacity, 12 Trays, 6 Port, Enclosure , w/o Mounting Kits
Spliced Fiber Storage Capacity	288 splices (12x24)
Size Height x Diameter	566mm x 250mm (w/o clamp), 566mm x 300mm (w/ clamp)
Cable Ports	1 oval port (30mm), 6 round ports (30mm)
Mounting Kits	Wall Mounting Kit - 2 Pole Mounting Kit - 2
See Other Document	