

## 576F Fiber Optic Splice Closures

Single Circuit Max: 48 Trays, 48x12 Fibers

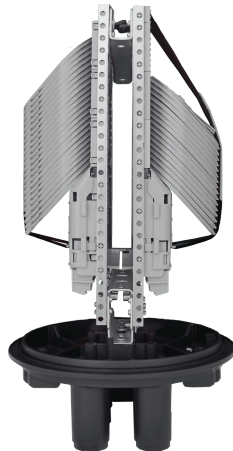
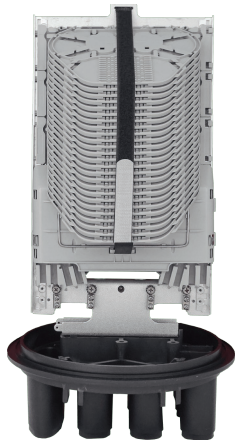
### Features

- Modular capacity up to 576 fibers
- May be used for cut, uncut and taut sheath applications.
- May be used for all fiber optic cable.
- Sheath retention & central strength member fasten system included.
- Closure construction and lightweight plastic provides strength and resistance to chemical and U.V attack
- Installation and reentry with a minimum of tools
- All hardware are included
- Protection class: IP68
- RoHS compliance

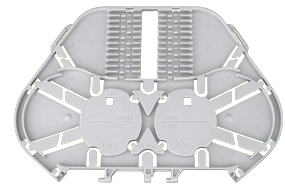


### Application

Underground, Aerial, Vault, Pole Mounting and Wall Mountable



Single Circuit Tray | Thickness: 4mm  
12 Splices Capacity



### Specifications

Model No.	YT01052   SSC-492250-6P-576-48T/48T-S12C 576x265m, 576 Fibers Capacity, 48 Trays, 6 Port, Enclosure , w/o Mounting Kits
Model No.	YT01053   SSC-492250-6P-288-24T/48T-S12C 576x265m, 288 Fibers Capacity, 24 Trays, 6 Port, Enclosure , w/o Mounting Kits
Model No.	YT01054   SSC-492250-6P-144-12T/48T-S12C 492x265m, 144 Fibers Capacity, 12 Trays, 6 Port, Enclosure , w/o Mounting Kits
Spliced Fiber Storage Capacity	576 splices (48x12)
Size   Height x Diameter	492mm x 250mm (w/o clamp), 492mm x 300mm (w/ clamp)
Cable Ports	1 oval port (30mm), 6 round ports (30mm)
Mounting Kits	Wall Mounting Kit - 2 Pole Mounting Kit - 2
See Other Document	