


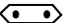
TE-8202A-W / TE-8202F-W series Fiber Optic Fusion Splicing Machine

Operation Manual

Main Features:

- 5 inches high resolution colorful LCD display, image can be turned according to position
- Average splice time: 10 second
- Average tube-heat time: 30 second
- Lithium battery: Rechargeable and up to 180 times of continuous splice and heat after fully charged
- Separately X or Y axis views with 300 times magnification and Cutting-edge technology for image processing
- New core alignment technology, the core alignment is more accurate
- New developed technology providing strong wind and dust resistance
- Working mode: Auto & Manual & Full-Auto
- USB Port
- Storing 6,000 groups of latest splice results.
- Multipurpose optical fiber fixture (3-in-1 fixture and SC/LC/FC connector fixture, patented technology)

Specifications:

Model no.	TE-8202A-W	TE-8202F-W
Applicable fiber	SM, MM, NZDS, EDF	
Average splice loss	0.02dB(SM), 0.01dB(MM), 0.04dB(NZDS), 0.04dB(ED)	
Splice time	10s (SM)	
Suitable for cutting optical fiber length	10~16mm	
Suitable for optical fiber core	Cladding diameter:80-150μm, Coating diameter:100-1000μm	
Return lose	≥ 60dB	
Fiber image magnification	Simultaneous X and Y views with 300 times magnification	
Tension test	2.0N(200gf)(standard)	
Splice program	50 groups	
Electrode life	5000 times	
Protection sleeve length	20mm~60mm	
Storage of splice result	6000 groups of splice results	
Monitor	5 "high resolution colorful LCD	
Communication port	USB (B type)	
Working lighting	1 LED light	
power indication	4 LED indication	
Operation condition	Temperature: -10~+50℃	
	Humidity: 0~95%RH	
	Altitude: 0~5000m	
Standard plug	A type 	F type 
Power supply	Lithium battery: 11.1V/5.2Ah	
	adapter: INPUT AC 100~240 50/60Hz; OUTPUT: DC15V/5A	
Dimension(W x D x H)	130 x 135x 130mm	
Weight	2.25Kgs (include battery) 1.88Kgs(not include battery)	

Package:

1. Machine x 1pc
2. AC Adaptor x1pc
3. Optical fiber splicing fixture (3-in-1)x1set
4. Battery x1pc
5. Spare Electrodes x 1set
6. Protection sleeve(60mm) x 25pcs
7. Cooling Tray x 1pc
8. Operation Manual x 1pc
9. Carrying Belt x 1pc
10. Carrying Case with Carrying Strap x 1pc
11. Communication soft and operation manual

Please scan QR code or visit <http://www.prokits.com.tw> for detail manual download




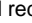


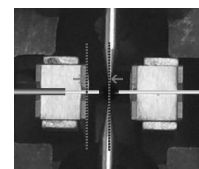
TE-8202A-W TE-8202F-W



Quick Reference Guide

The guide is for the basic operation. For the detailed information, please refer to <http://www.prokits.com.tw>.

1. Power Supply: Two ways of supplying power to the fusion splicer: a. internal battery ; b. AC power supply. Please turn off fusion splicer before operation.
 - 1.1. Insert battery: Insert the battery into the battery groove. Make sure it is properly fixed.
 - 1.2. Remove battery: Push the battery out
 - 1-3. Using AC Adaptor : Put the plug into socket as matching the anchor point.
2. Turning on Splicer Power
Press power button  to switch ON/OFF device.
3. Setting Fiber in Splicer
 - 3.1. Open the windproof cover ;
 - 3.2. Open the left and right sheath clamps;
 - 3.3. Put the stripped fiber on the V-groove, and make sure the fiber end between groove edge and electrode (as pic).
 - 3.4. Holding the fiber and close the sheath clamps carefully. If the fiber is not properly set, please adjust it;
 - 3.5. Repeat the steps 3.3 and 3.4 for second fiber;
 - 3.6. Close the windproof cover.
4. Splicing Operation
 - 4.1. Mode: Manual /Auto / Full-auto you can choose the operation model in operation menu.
Manual: Fusion splicing operate step by step controlled by the operator via the keypad.
Auto: Press the  button, it will automatically core to core alignment and fusion splicing.
Full-auto: Automatically operation after closed the windproof cover
 - 4.2. Fiber type: SM/MM/NZDS/ED
5. Pause function :
 - 5.1. Turn on the pause function: under auto and Full-auto mode, after core to core aligning the fiber, splicing machine will stop, then press  button, the splicer began to fuse.
Turn off: no effect any splicing mode operation.
6. Take out the fiber and heat the fiber
 - 1) Open the heater cover;
 - 2) Open the windproof cover ;
 - 3) Open the right and left sheath clamps;
 - 4) Take out the fiber and move the fiber protection sleeve to the splice point. Make sure the splice point in the center of the fiber protection sleeve tube
 - 5) Put the fiber protection sleeve on the heater, close the heater cover;
 - 6) Press  button, and red indicator light will light up;
 - 7) When the indicator light off , it means that the heating is finished;
 - 8) Open the heater cover, check if there are air bubbles in protection sleeve;
 - 9) Put the fiber on the cooling tray, until it cooling down



PROKIT'S INDUSTRIES CO., LTD

<http://www.prokits.com.tw>

Email: pk@mail.prokits.com.tw

