

Optical Laser Source
MT-7801/MT-7802/MT-7803

English

WARNING

You are cautioned that changes or modifications not expressly approved in this document could void your authority to operate this equipment. To reduce the risk of fire or electric shock, do not expose this apparatus to rain or moisture. To avoid electrical shock, do not open the cabinet. Refer servicing to qualified personnel only.



NOTE

As the laser is harmful to the eyes, do not attempt to disassemble the cabinet.

Precautions for Use

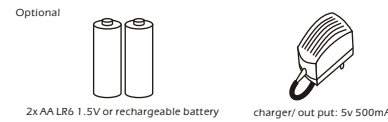
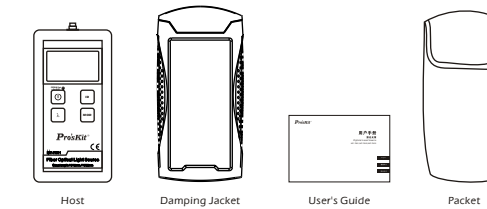
Use batteries
At the same time, can not use different style or different capacitance batteries. And only charge the rechargeable batteries.

Avoiding condensation problems
As much as possible, avoid sudden temperature changes. Do not attempt to use the drive immediately after moving it from a cold to a warm location, to raising the room temperature suddenly, as condensation may form with in the drive. If the temperature changes suddenly while using the drive, stop using it and take out batteries for at least an hour.

Storage
When long time no use, must take out the batteries to avoid destroying the device.

1

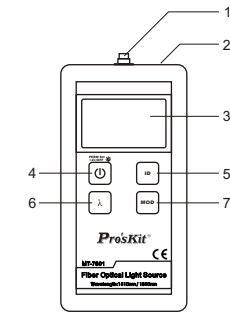
Check the accessories
Standard Edition



Optional

2

Description



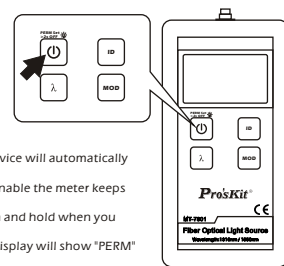
- 1 Fiber optic adapter
- 2 Charging Socket
- 3 LCD
- 4 Power Button
- 5 Wavelength ID
- 6 Output wavelength switch button
- 7 Load modulation frequency

3

On/Off and Permanent On

Press " " button will turn on the meter. Press button again for two seconds or more will turn off the meter.

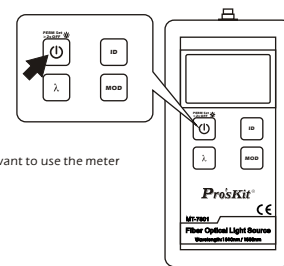
This meter has a power-saving function, normal boot and ten minutes without any operation, the device will automatically shut down. If you need to shield this function and enable the meter keeps on working, only need to press the " " button and hold when you boot the instrument. After two seconds, the meter display will show "PERM" which means permanent power on.



4

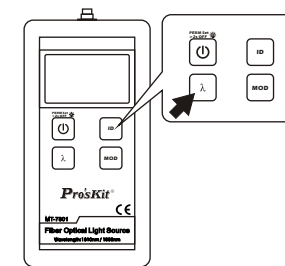
Backlight Function

Under boot status, short press the " " button, you can control the backlight function on or off. The backlight function is used when you want to use the meter at night or darker occasions.



5

Select Wavelength

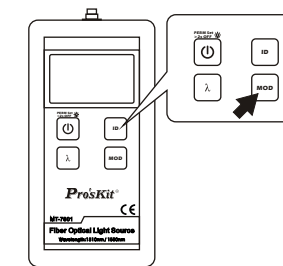


After pressing " " button, you can select the required output wavelengths. According to the product type, you can select different output wavelengths

The power meter or other measuring equipments should correspond the wavelength of the light source.

6

Modulation wave output

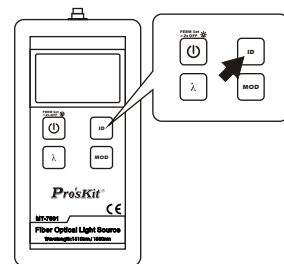


After pressing " " button, you can load a confirmed carrier frequency in the current output laser.

This instrument has three carrier frequencies for selecting: 270Hz, 1KHz, 2KHz.

7

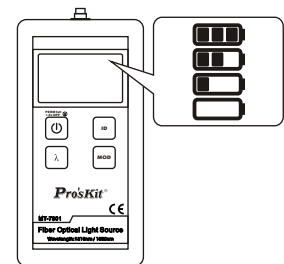
Wavelength identification



Press " " Button, it start the wavelength recognition function, and the upper left of the display screen shows "ld". When connect with the power meter supporting wavelength recognition function, it can show the current output wavelength of light source, and switch to measure the wavelength automatically.

8

Power Indicator



- Four levels indication of power detection
- Represents the remaining 80%---100% electricity
 - Represents the remaining 40%---80% electricity
 - Represents the remaining 20%---40% electricity
 - Represents the remaining electricity less than 20%

9