

Pro'sKit[®]

FB-1688 Fiber Cleaver

FB-1688C Fiber Cleaver with Scrap Collector



User's Manual

1st Edition: 2017

©2017 Prokit's Industries Co., Ltd

Thanks for buying PRO'SKIT FB-1688 Fiber Cleaver. Please read these instructions carefully before using the product.

This product has been designed and manufactured to assure personal safety.

Improper use can result in bodily injury and serious damage to fiber cleaver.

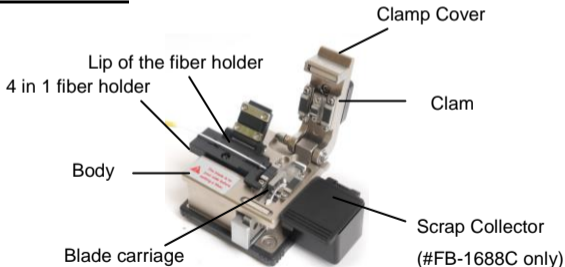
Please read and observe all warning instructions given in this operation annual.

1. Do not disassemble or lubricate any parts of cleaver. Doing so could cause serious damage to the cleaver.
2. The FB-1688 is a precision tool. Do not impact the cleaver by hitting or dropping it. Doing so may cause personal injury and loss of cleaving performance.
3. Glass fiber fragments are extremely sharp. Handle with care. Wear safety glasses at all time during cleaving operation for protection from glass fiber.
4. Dispose of glass fiber fragments properly.
5. The blade of cleaver is extremely sharp. Do not touch it with bare hands.
6. Do not impact the Clamp Cover. Doing so could cause damage to cleaver and loss of cleaver performance.
7. If cleaver is damage or problem occurs, please contact our maintenance service center.

SPECIFICATION

Cladding Diameter	125 μm
Fiber Count Coating Diameter	Single fiber 250 μm / 900 μm / 3mm & Drop Cable
Cleaver length	5-20mm
Dimensions	62 x 60 x 56 mm
Cleaver Blade (5FB-1688-BLAD)	16 points

STRUCTURE



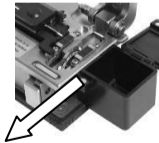
4 in 1 FIBER HOLDER

4 in 1 fiber holder for 250um,900um, 3mm and Butterfly cable.



OPERATING PROCEDURE

1. Open the Clamp Cover and lid of the fiber holder. Please make sure the blade carriage should be in the forward position.



2. Insert the fiber cable into the correct groove with the end of the fiber coating.



3. Close the lid of the fiber holder and clamp cover.



4. Slide the blade carriage to rear side of the cleaver. The fiber will be cleaved.



5. Open the Clamp Cover. Then open the lid of fiber holder and lift the newly cleaved fiber. Lift the off-cut and dispose it properly.
6. For single fiber 250 μ m~ 900 μ m



7. For single fiber 3mm (Patch cord)



8. For Drop cable



Notice:

While cutting 3.0mm patch cord or 3x2mm drop cord, the groove can be stored in the bottom of the fiber holder.

CLEAN

To keep excellent cleaving quality, please clean the fiber cleaver after use. USE a cotton swab moistened with isopropyl alcohol to clean the blade edge, the rubber pad of the clamp and anvil, the fiber holder and the grooves.



CAUTION

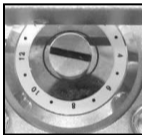
- Dust on the blade edge or clamp might cause loss of cleaving performance or poor quality of fiber end face.
- Do not clean them with any other kind of chemicals.
- If the Clamp Cover is closed leaving an off-cut fiber on the clamp, the rubber pad of clamp will have a trace of fiber, causing loss of cleaving performance or poor quality of fiber end face.

BLADE POSITION CHANGE

As the number of the cleaving increases, a symptom that fiber can not be cleaved or cracks will occur. If such symptom continues to appear, the blade position is worn out. Rotate the blade according to the following procedures and use a new blade position.

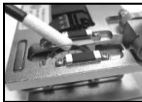
[Reference] 1,000 fiber per position

1. Loosen the blade setscrew.



2. Rotate the blade to the next position by pressing its side or edge with cotton swab.

Rotate the blade in the direction indicated by the arrow.

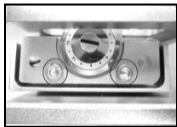


CAUTION

- Do not rotate the blade with hands.
 - Do not rotate the blade with metallic tweezers. Doing so may damage the blade.
3. Tighten the blade setscrew.
 4. Try and cleave the fiber. Make visual check of the fiber end face with splicer. If the fiber end face is poor, adjust the blade height. (Refer to “Blade height adjustment)

BLADE HEIGHT ADJUSTMENT

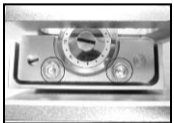
Loosen the 2 Hex. Screws with the attached hex. key



1. Turning the blade height adjustment slot screw



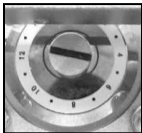
2. Tighten the 2 Hex. Screws with the attached hex key.



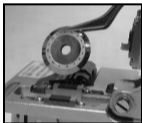
3. Cut fiber for test the performance of cleaver, if not qualify adjust the blade again until optimal the quality.

BLADE REPLACEMENT

1. Unscrew the blade setscrew.



2. Remove the blade with tweezers.



CAUTION

The edge of a blade is manufactured precisely. If the edge is hit against metallic object, it will crack, result in poor cleaving performance. Handle with care.

When using metallic tweezers, be careful not to damage the blade. Do not touch the blade with hands. Use gloves.

Dispose of old blade properly.

3. Insert a new blade in the cleaver so that "0" of the number is in the top position. The hole of blade should be aligned with the hole of blade receptacle.
4. Tighten the blade setscrew completely.

5. Adjust the blade height, referring to “ Blade height adjustment”

TROUBLESHOOTING

If the cleaving problem occurs, the followings are possible are causes.

Situation	Solution
The fiber is placed obliquely in cleaver.	Make sure that the fiber is placed straight in the cleaver
The blade position is too high.	Adjust the blade height.
Dust or dirt remains on the clamp.	Clean the clamp
Dust or dirt remains on the blade.	Clean the blade.
Dust or dirt remains on the fiber.	Remove the fiber coating and clean the blade fiber again.