

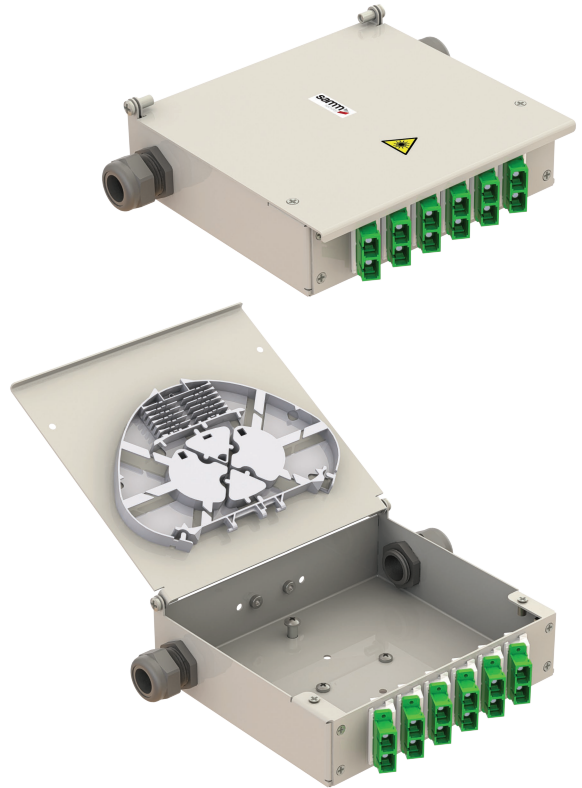
DIN Rail Fiber Optic Module | Version 1

FDF-DIN-PX-XX-XX-XX

Easy to install and with a compact design, this box allow the user to connect up to 12/24 fibers. This fiber box, mountable on DIN rail in electric or communication cabinets or other environments on wall surfaces.

Properties

- Supports up to 12/24 fibers per module
- Cable entry/outlet from the bottom and top
- Splice and patch solution
- Bending radius protected fiber over-length storage ($r \geq 30$ mm)
- Can be easy snapped on a DIN-Rail 35mm
- Temp range : -40 °C to +70 °C
- Splice tray for 12 Fiber
- Fiber reservoir
- 2 x PG16 cable gland
- Available unequipped, partly and fully equipped
- RAL 7035 Light Grey Powder coated

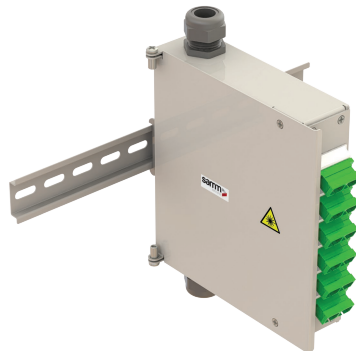


Mounting Options

Horizontal



Vertical



Sideway Vertical



Product Coding

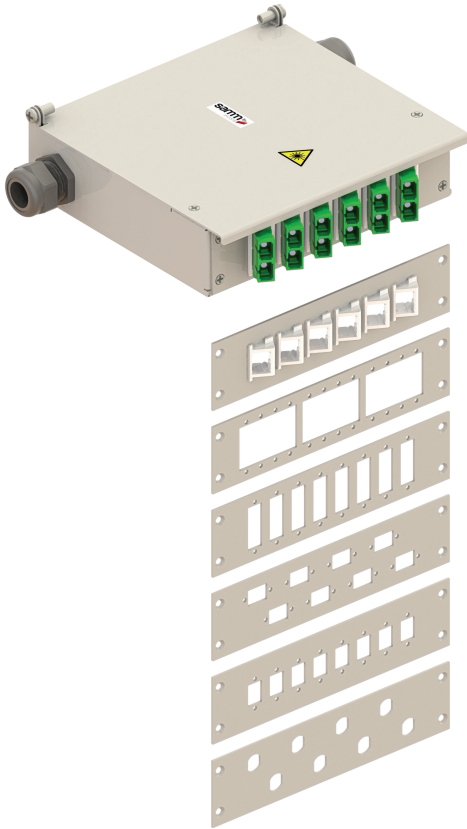
FDF-DIN-V1-PX-XX-XX-XX

Sample Coding

FDF-DIN-V1-P1-SM-SC-12

SC-DX 12 FO DIN Rail Box, Single Mode, Angled

Panel Options



Panel Model	Adapter options
P1	6 x SC-Duplex / 12 FO Angled
P2	6 x SC-Simplex / 6 FO Angled, 6 x LC-Duplex / 12 FO Angled
P3	12 x SC-Duplex / 24 FO
P4	8 x SC-Duplex / 16 FO
P5	8 x SC-Simplex / 8 FO, 8 x LC-Duplex / 16 FO
P6	8 x SC-Simplex / 8 FO, 8 x LC-Duplex / 16 FO
P7	8 x FC-Simplex / 8 FO, 8 x ST-Simplex / 8 FO

Dimensions

