



## INSTALLATION PROCEDURE FOR RFS

*Berry Plastics warrants that the product conforms to its chemical and physical description and is appropriate for the use stated on the technical data sheet when used in compliance with Berry Plastics written instructions. Since many installation factors are beyond the control of Berry Plastics, the user shall determine the suitability of the products for the intended use and assume all risks and liabilities in connection herewith. Berry Plastics liability is stated in the standard terms and conditions of sale. Berry Plastics makes no other warranty either expressed or implied. All information contained in this technical data sheet is to be used as a guide and is subject to change without notice. This technical data sheet supersedes all previous data sheets on this product.*



Local Distributor / Representative:

For contact details of local Distributors / Representatives  
Please visit [www.berrycpg.com](http://www.berrycpg.com).

Headquarters : Berry Plastics Tapes & Coatings Division, Franklin MA, USA

**Franklin, MA, USA**

Tel: +1 508 918 1714  
US Toll Free: +1 800 248 0149  
Fax: +1 508 918 1910  
CPG@berryplastics.com

**Houston, TX, USA**

Tel: +1 713 676 0085  
US Toll Free: 01 888 676 7202  
Fax: +1 713 676 0086  
CPGH@berryplastics.com

**Tijuana, Mexico**

Tel USA +1 858 633 9797  
Fax US: +1 858 633 9740  
Tel Mexico: +52 664 647 4397  
Fax Mexico: +52 664 647 4370  
CPGTJ@berryplastics.com

**Westerlo, Belgium**

Tel. +32 14 722500  
Fax +32 14 722570  
CPGE@berryplastics.com

**Baroda, India**

Tel: +91 2667 264721  
Fax: +91 2667 264724  
CPGIN@berryplastics.com

## INSTALLATION PROCEDURE OF RFS



### Notes :

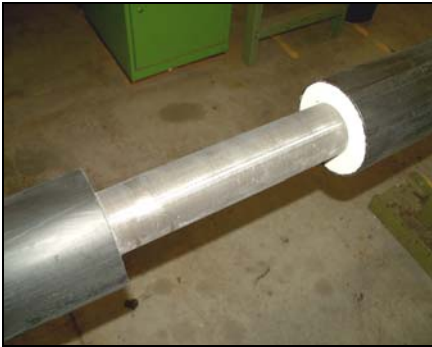
Installations must be done according to local regulations and usual safety precautions.

This installation instruction is intended for the RFS sleeve to be installed on PU insulated pipes with PE line coating.

For the selection of other Covalence Raychem products contact the nearest Berry Plastics Sales Office.

### Materials and equipment

1. Appropriate size Covalence Raychem RFS sleeve.
2. Berry Plastics recommended torch type or equivalent.
3. Standard safety equipment such as gloves, goggles, hard hat, ...



Prepare cutback according to the half shells size.



Position the half shells into the cutback.



Position the RFS sleeve over the half shells (10 to 15mm over line coating on each side). Wrap RFS sleeve tight around the joint with an overlap of +/-50 mm onto itself, heat the adhesive side and the area of the overlap slightly prior to close overlap area. Shrink down the RFS sleeve with soft flame and move circumferential from centre to outside in both directions.