

Building Distributor

1. General

BUDI is a building distributor with a fiber management system offering splicing functionality. It provides mechanical and environmental protection for fiber optic components.

2. Kit content

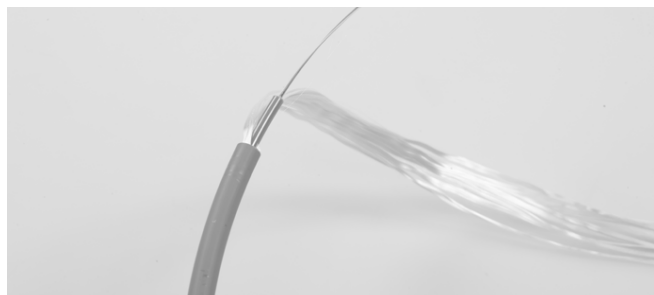


3.3 Cut the rubber seal where the feeder cable will be installed.

3. Feeder cable installation



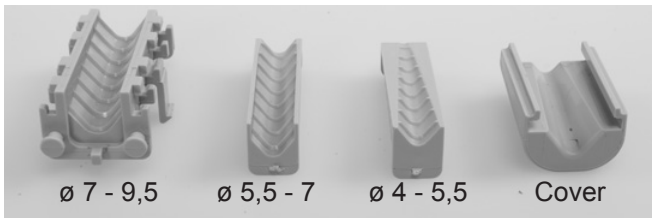
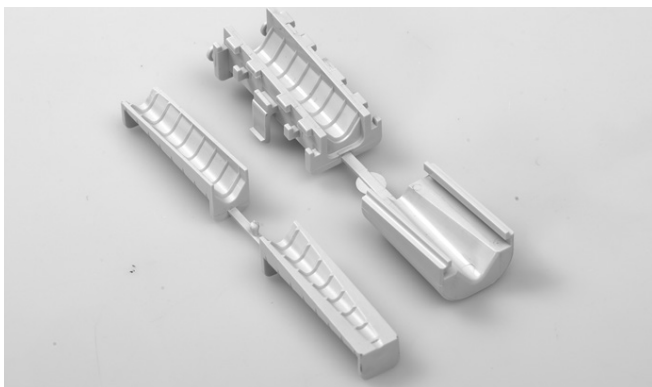
3.1 Strip the feeder cable (1.5m) and leave some aramid yarn for termination.



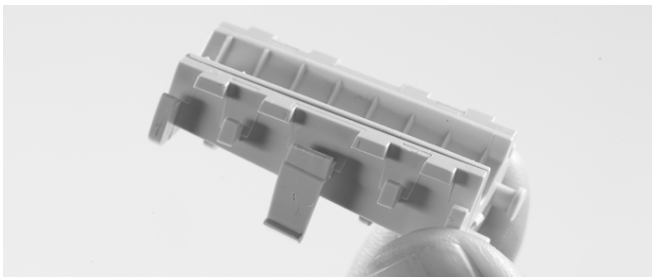
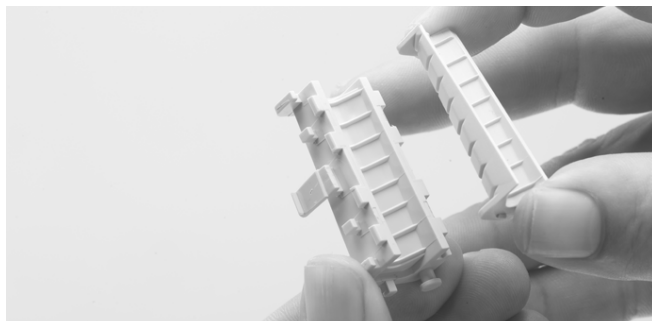
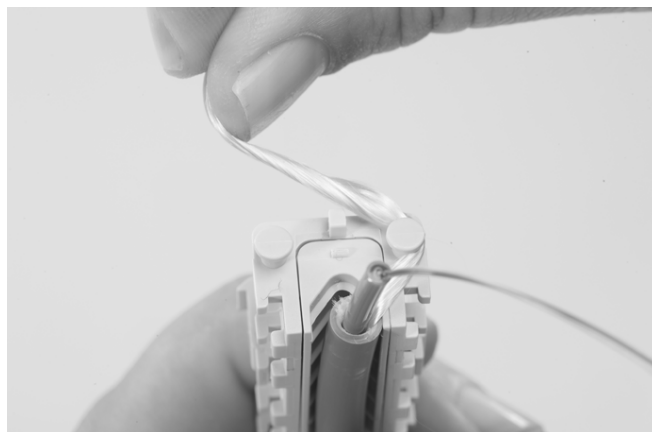
3.2 Strip the loose tube 2cm after the outer jacket.



3.4 Break off the parts needed for feeder cable termination.



3.5 Break off the parts needed for feeder cable termination.



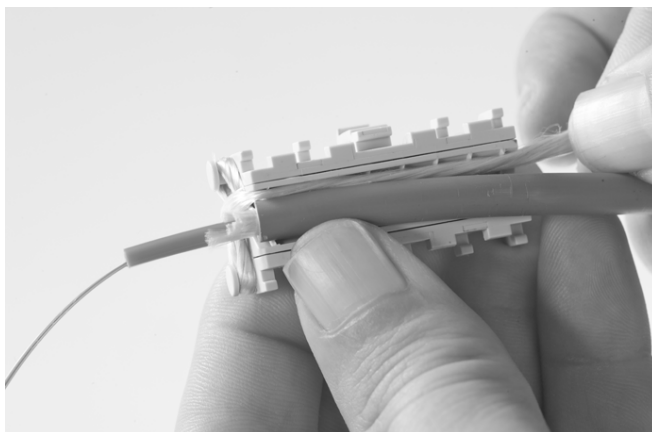
3.6 Install the insert into the cable holder, depending the cable diameter.



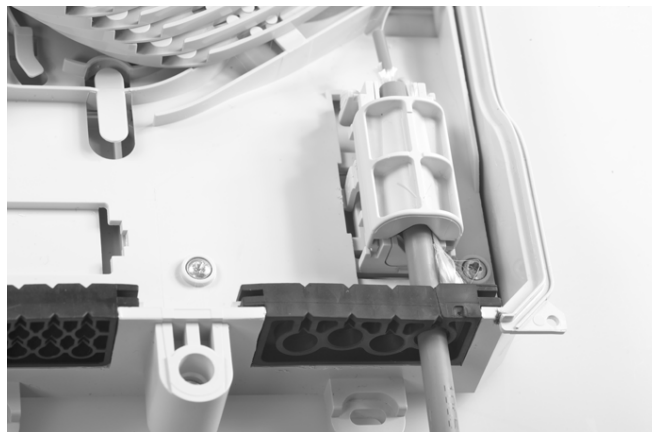
3.7 Install the feeder cable into the holder.



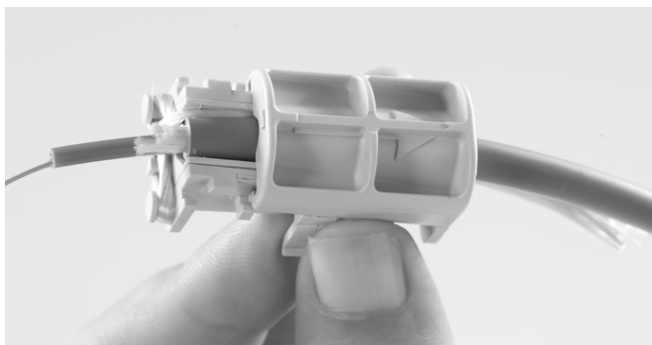
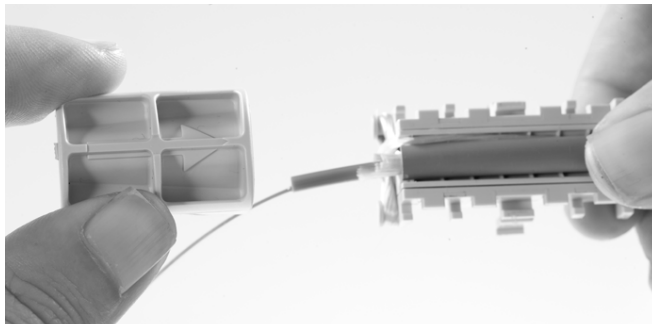
3.8 Route the aramid yarn around the lips as shown on the pictures for termination.



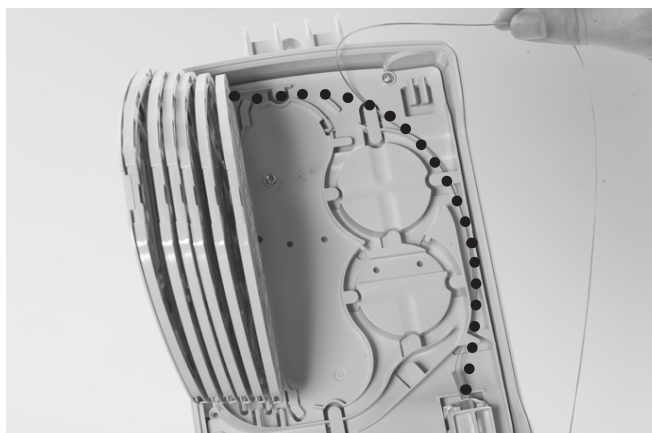
3.9 Route the aramid yarn along the feeder cable.



3.11 Install the cable holder into the box on the lowest position (adjust the position depending on the cable diameter)..



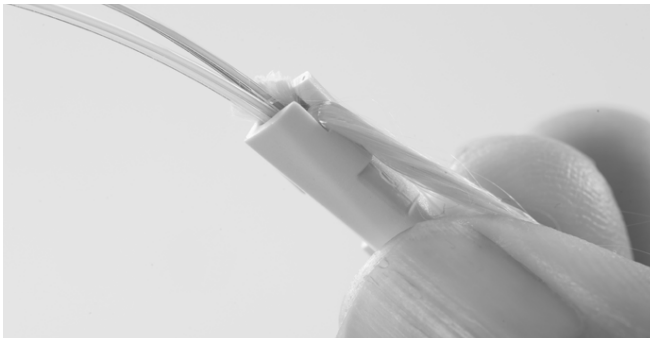
3.10 Close the cable holder with the cover. Check the orientation of the arrow on the cover.



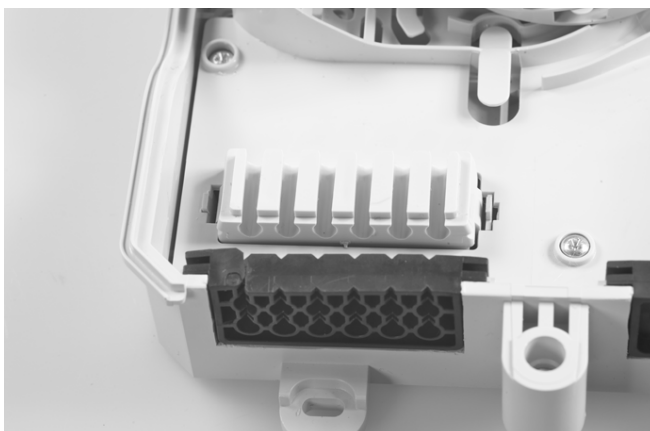
3.12 Route the fibers of the feeder cable towards the splicing trays.

4. Drop cable installation

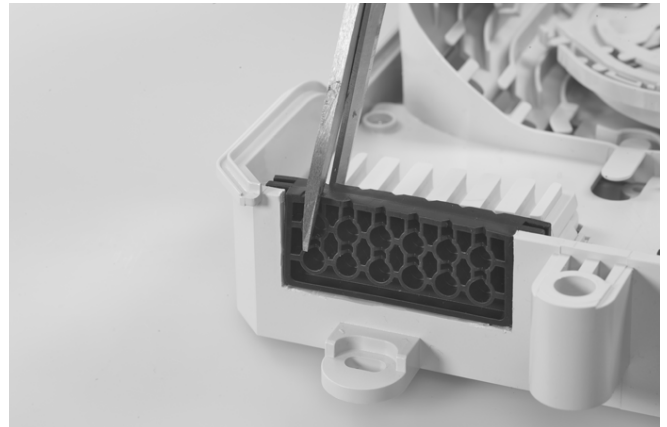
4.1 Slide the termination device over the drop cable.



4.2 Strip the drop cable over a length of 1,5 m and route the aramid yarn into the slit of the device.



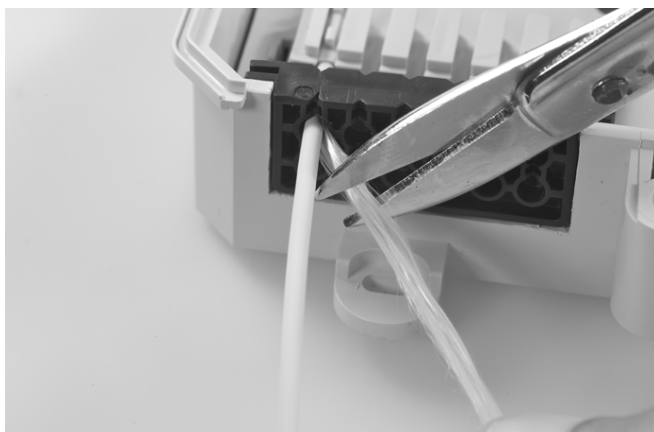
4.3 Install the holder for the termination device into the box. Check the orientation of the device.



4.4 Cut the rubber seal where the drop cable will be installed.



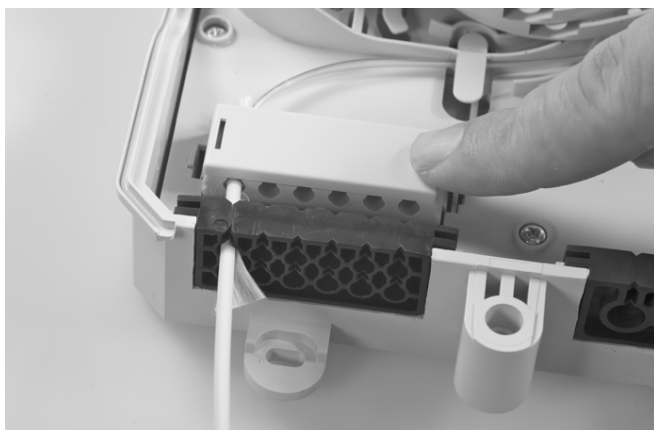
4.5 Install the drop cable into the seal and pull the termination device back into the holder.



4.6 Cut the aramid yarn and close the holder with the cover.



4.7 Route the fibers of the drop cable towards the splicing tray.



5. Closing the box



5.1 Install the cover on the box and close with the screw.

**Tyco Electronics Raychem
bvba**

Diestsesteenweg 692
B-3010 Kessel-Lo, Belgium
Tel.: 32-16-351 011
Fax: 32-16-351 697
www.te.com
www.telecomnetworks.com

TE (logo) and TE Connectivity are trademarks of the TE Connectivity group of companies and its licensors.

While TE Connectivity and its affiliates referenced herein have made every reasonable effort to ensure the accuracy of the information contained in this catalog, TE Connectivity cannot assure that this information is error free. For this reason, TE Connectivity does not make any representation or offer any guarantee that such information is accurate, correct, reliable or current. TE Connectivity reserves the right to make any adjustments to the information at any time. TE Connectivity expressly disclaims any implied warranty regarding the information contained herein, including, but not limited to, the implied warranties of merchantability or fitness for a particular purpose. TE Connectivity' only obligations are those stated in TE Connectivity' Standard Terms and Conditions of Sale. TE Connectivity will in no case be liable for any incidental, indirect or consequential damages arising from or in connection with, including, but not limited to, the sale, resale, use or misuse of its products. Users should rely on their own judgment to evaluate the suitability of a product for a certain purpose and test each product for its intended application.